

Background of Israeli Policy of Integration in VET

Prof. Vladimir (Ze'ev) Khanin

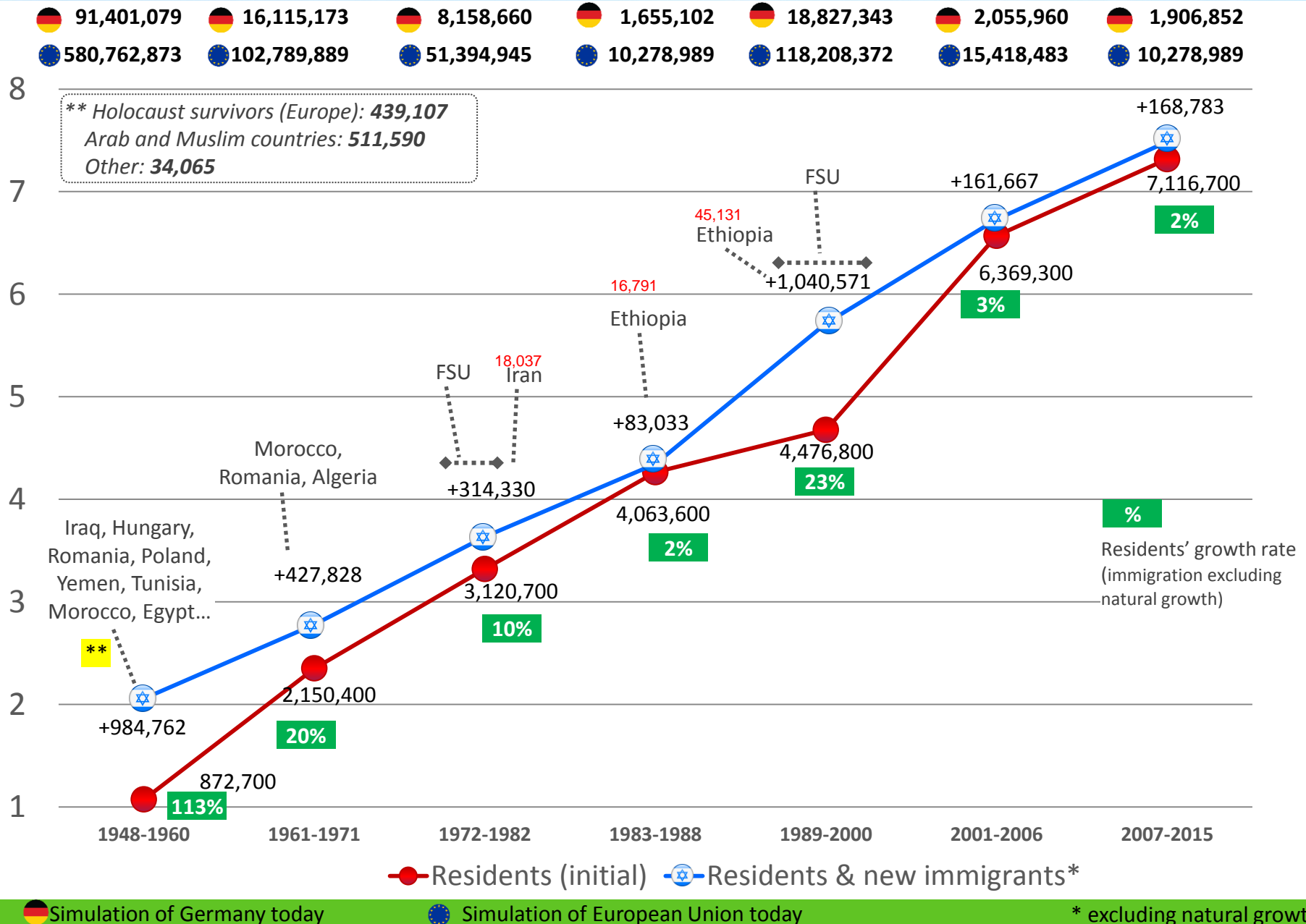
Chief Scientist, Israeli Ministry of Aliya and Integration

**Presentation at the Seminar:
VET and Social Integration of Immigrants and Refugees in Israel
and Germany**

Tel-Aviv, 23-25 October 2017



Historical Survey of Aliyah (millions)



Statistical Data

1989-2016/17

מרץ 2015





SINCE THE YEAR 1989

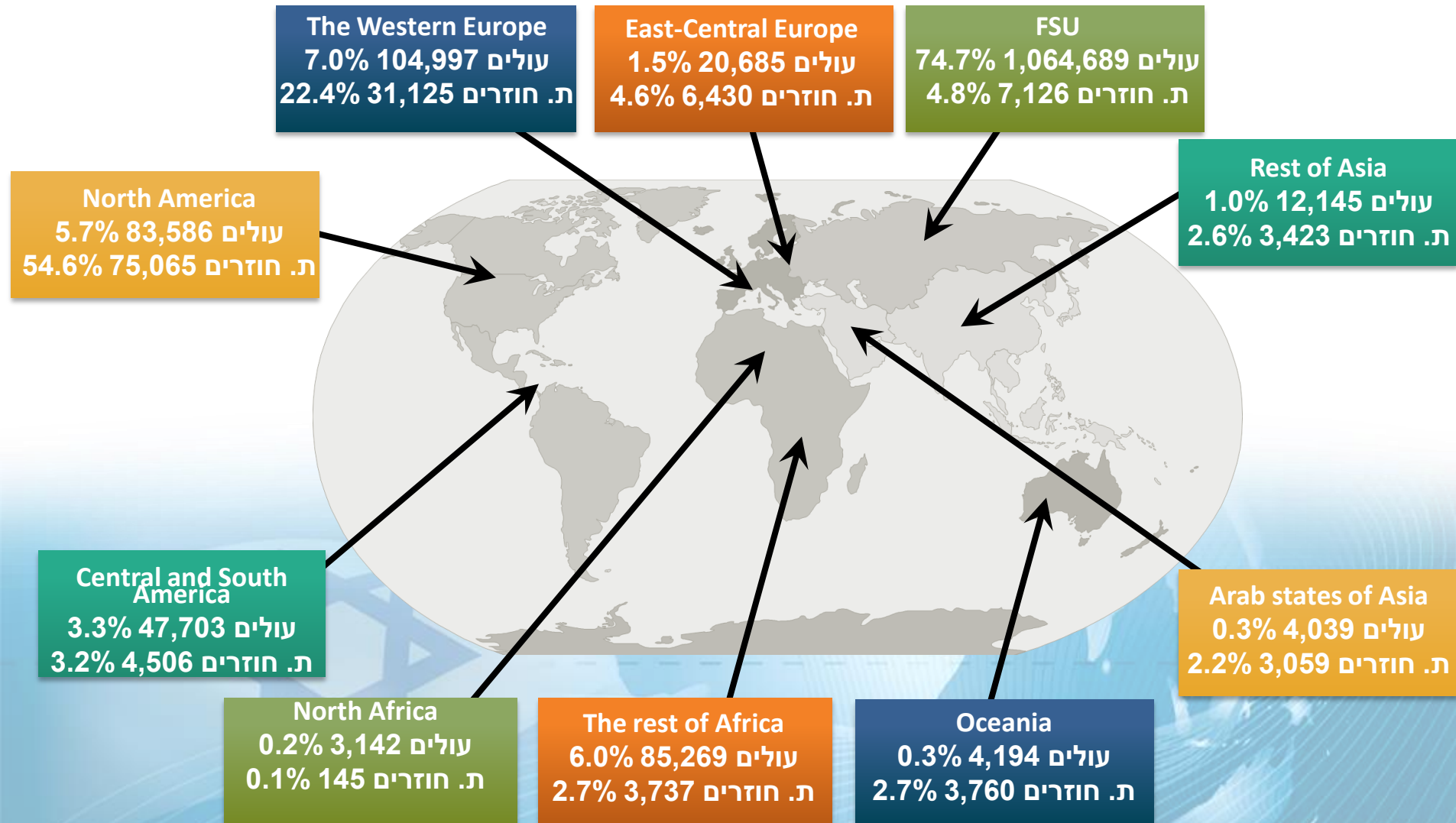
1,433,315*

JEWISH IMMIGRANTS ARRIVED TO ISRAEL



Aliya to Israel, 1989-2016

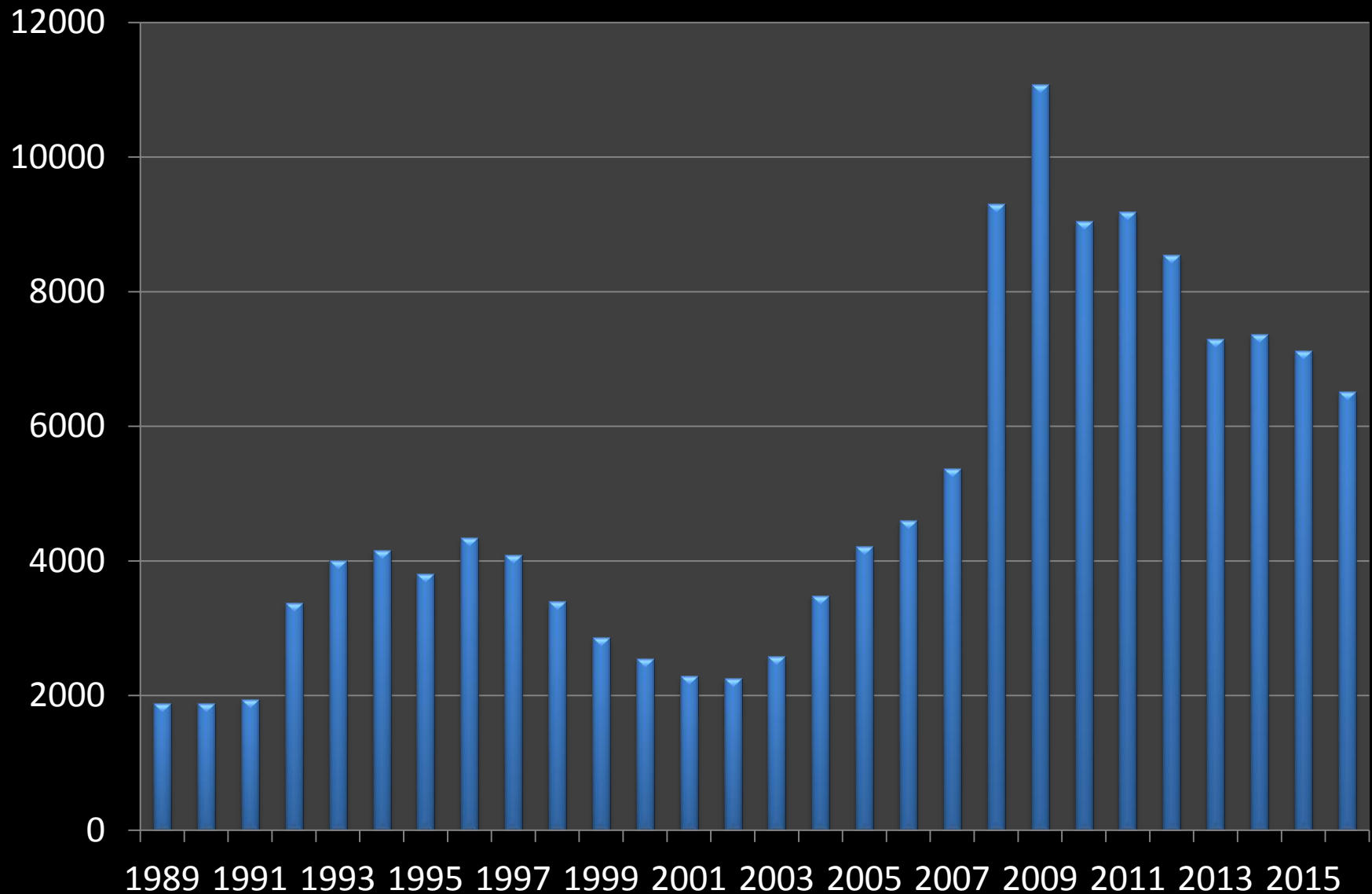
Olim 1,433,315 Returning residents 138,692



SELECTED ALIYA COUNTRIES DATA, 2010-16 (%)

2016	2015	2014	2013	2012	2011	2010	ארצות מוצא עיקריות
100%	100%	100.0%	100.0%	100.0%	100.0%	100.0%	סה"כ עולים
16.6%	24.6%	25.2%	17.0%	10.4%	10.1%	10.6%	France
22.9%	24.4%	22.1%	10.1%	11.4%	11.2%	9.6%	Ukraine
27.8%	23.5%	17.2%	20.7%	19.1%	19.7%	18.4%	Russia
11.3%	9.7%	14.1%	18.0%	18.9%	24.5%	20.9%	USA/Canada
2.4%	2.3%	2.4%	2.6%	3.5%	2.8%	3.7%	UK
0.6%	1.3%	1.3%	0.8%	0.9%	0.6%	0.7%	Italy
2.3%	1.4%	1.2%	1.0%	1.1%	1.0%	1.4%	Brasilia
0.7%	0.9%	0.9%	1.4%	1.0%	1.1%	1.3%	Belgium
15.4%	16.7%	15.7%	28.2%	33.7%	34.2%	33.5%	Other

Number of Returning Residents 1989-2016 (total: 138,692)



Background of Israeli Policy of Integration in VET

Prof. Vladimir (Ze'ev) Khanin

Chief Scientist, Israeli Ministry of Aliya and Integration

**Presentation at the Seminar:
VET and Social Integration of Immigrants and Refugees in Israel
and Germany (Part 2)**

Tel-Aviv, 23-25 October 2017



Integration Policies and Practice



The immigration-related laws of the State of Israel

- **The Law of Return**
- **The Citizenship and Entry into Israel Law.**



The Law of Return - 1950

The Law of Return bestows the right to every Jew to “make aliya” to Israel, and thus become an Israeli citizen.

In 1970 the law was amended and accorded the right to immigrate to non-Jews who are either:

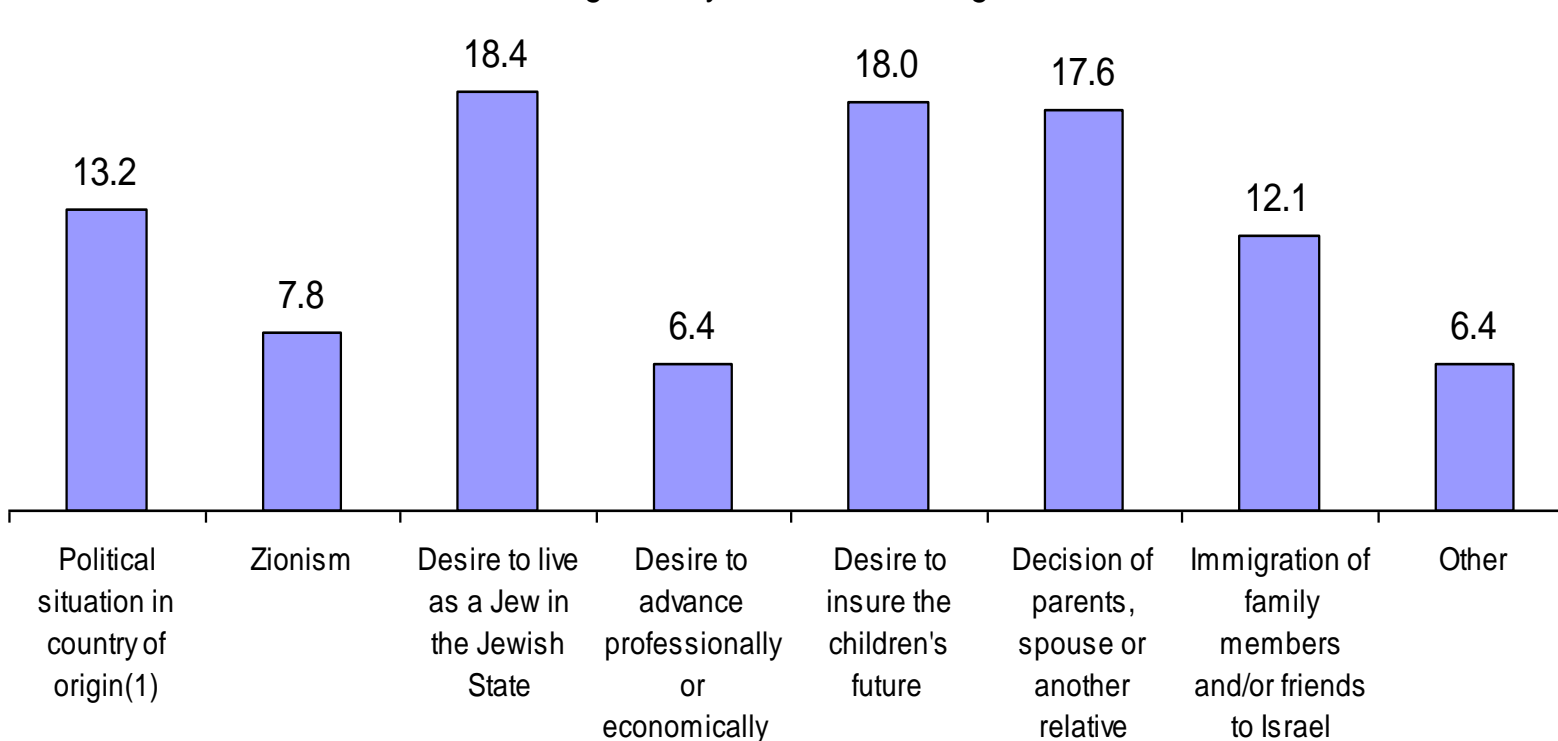
1. Children or grandchildren of Jews
2. Spouses of Jews or spouses of children or grandchildren of Jews

Israeli citizenship becomes effective on the day of arrival.



Reasons of Immigration

Immigrants by reason of immigration



Reasons for Emigration

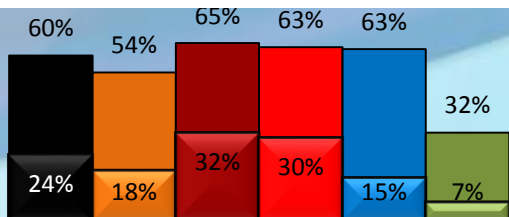
■ All respondents

■ Russian speakers - Asia

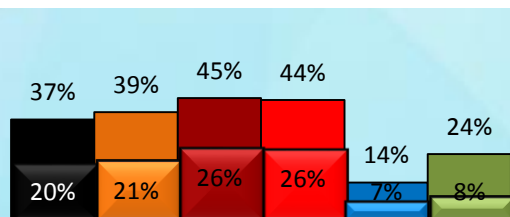
■ Russian speakers - Europe

סה"כ צוין

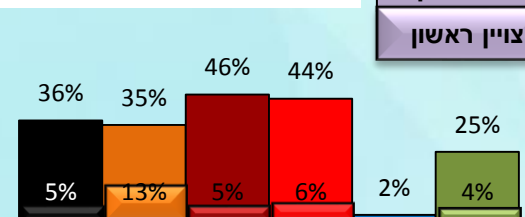
צוין ראשון



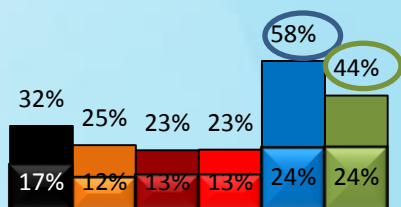
In sake of the children's future



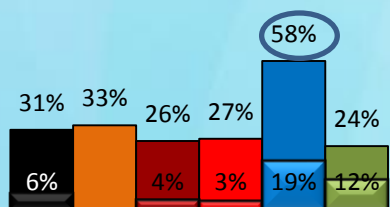
Because of relatives and friends who live in Israel



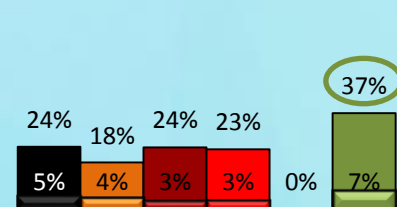
The economic situation in the country of origin



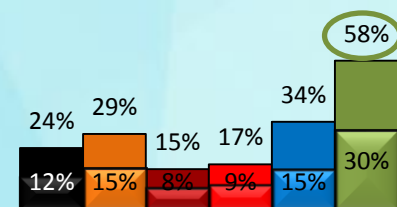
Wish to live as a Jew in a Jewish state



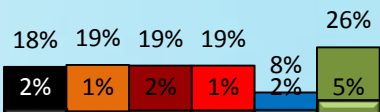
To raise the children in a Jewish state



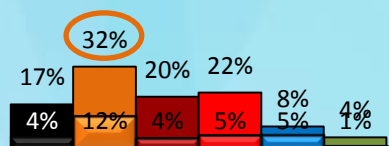
Professional or economic advancement



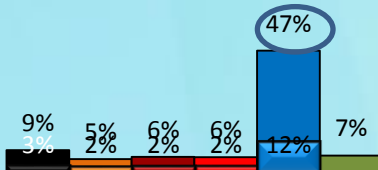
Lack of personal security in the country of origin



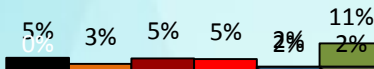
The political situation in the country of origin



Due to parent, spouse or other relative



Anti-Semitism

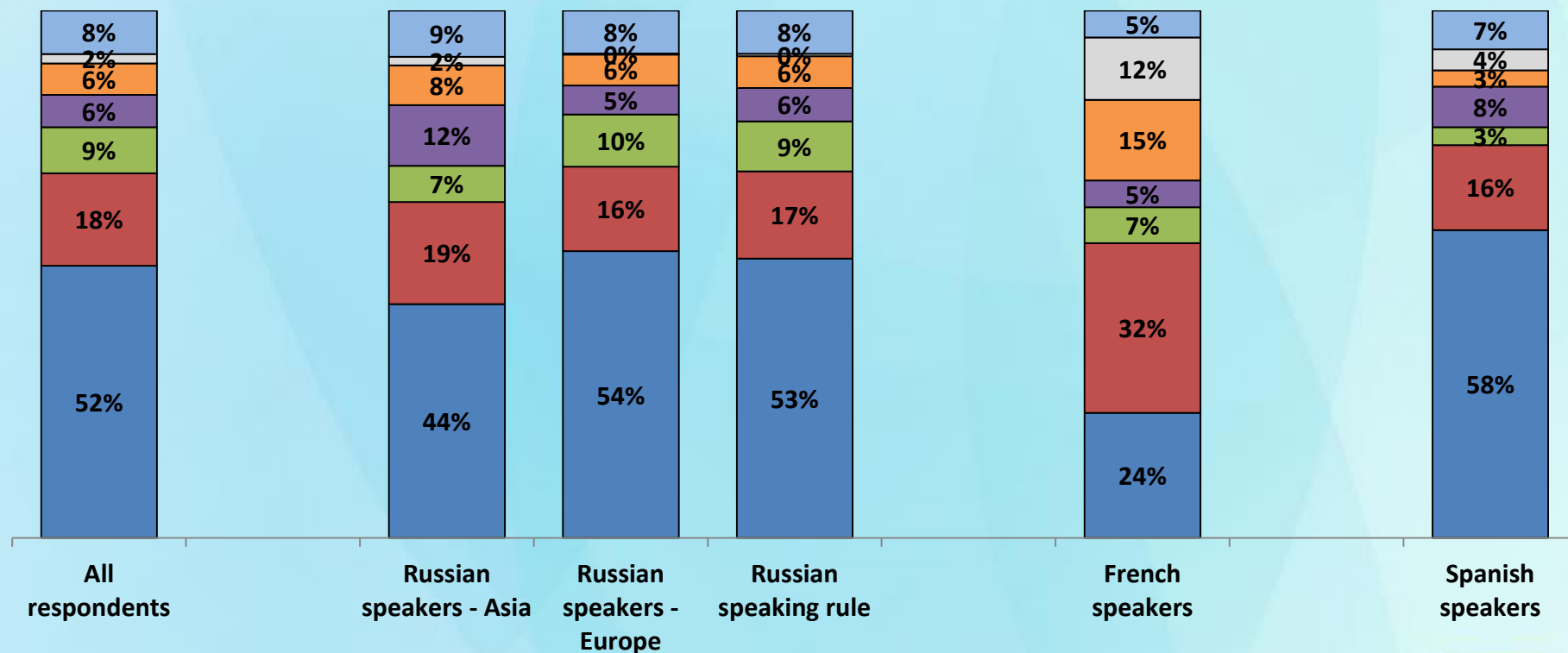


Lack of opportunities to immigrate to another country



Major problems after the immigration to Israel

Other Social life Health housing Children's accomodation in new country Hebrew study Work



Established in 1968 to meet the existential challenge of Absorption, the Ministry of Aliyah serves as a “Mini-Government”...



Business Card

1989 -2015

1.40 million new immigrants made aliyah to Israel.

1989 — 2015

Approximately **132,000** returning residents received services from the Ministry.

Every Year

Approximately **300,000** new immigrants apply to our offices to receive services.



Areas of Ministry Assistance

- Guidance and counseling in all areas of life.
- Financial assistance and support.
- Assistance in learning Hebrew.
- Assistance in employment and entrepreneurship.
- Housing assistance
- Social integration of immigrants into Israeli society services
- Financial aid and counseling for higher education
- Convergence to Judaism – by the immigrant's choice



Background of Israeli Policy of Integration in VET

Prof. Vladimir (Ze'ev) Khanin

Chief Scientist, Israeli Ministry of Aliya and Integration

**Presentation at the Seminar:
VET and Social Integration of Immigrants and Refugees in Israel
and Germany – Part 4**

Tel-Aviv, 23-25 October 2017



Tailored Integration Programs



Special discounts and services regarding public housing, healthcare, and municipal housing tax, social & cultural activities, special allowance beyond minimum pension

Senior Citizen
Olim
1989-2014
275,800
(20%)



Youth centers offering Hebrew-language immersion, housing and social networking, B.A\M.A grants, Tutoring & on-campus activities, municipal centers for youth, volunteer programs, civil\military service

Minor Olim (0-17)
1989-2014
365,560
(26.6%)



Special allowance for extra classroom hours of language studies, preparatory courses for matriculation exams, afternoon activities in partnership with local municipalities, youth at risk intervention programs

Youth
1989-2014
188,450
(13.7%)

Special Assistance for Specific Communities

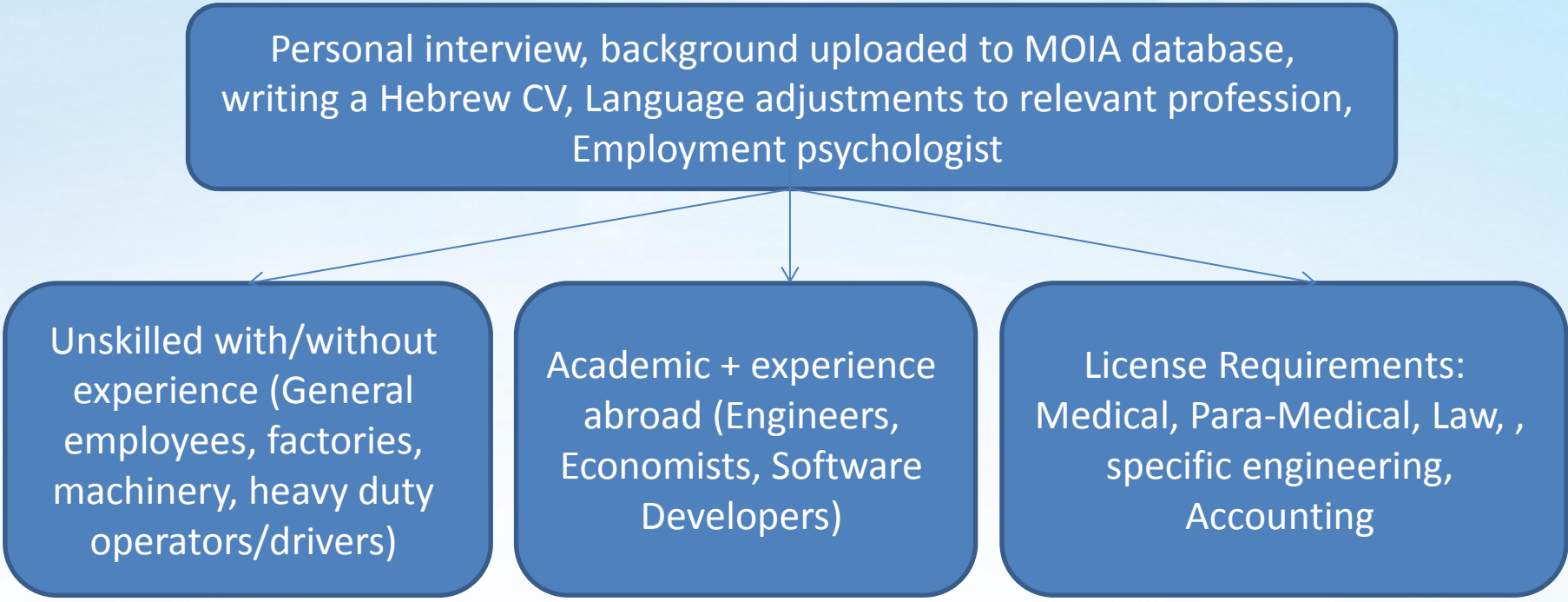
Africa (Ethiopia), Arab countries, Caucasus (FSU)

- Enhanced academic programs and student assistance
- Educational programs for school age children
- Cultural-lingual mediation in health care services, schools and municipal services
- Ministry maps areas with large populations of Olim to identify specific populations in need of social welfare assistance e.g.
 1. Domestic violence prevention programs
 2. Special programing for second generation immigrants
 3. Support Programs for Olim completing civil\military service

PEP (Personal Employment Program)

Goal: Leveraging our human capital

Personal interview, background uploaded to MOIA database,
writing a Hebrew CV, Language adjustments to relevant profession,
Employment psychologist



```
graph TD; A[Personal interview, background uploaded to MOIA database, writing a Hebrew CV, Language adjustments to relevant profession, Employment psychologist] --> B[Unskilled with/without experience (General employees, factories, machinery, heavy duty operators/drivers)]; A --> C[Academic + experience abroad (Engineers, Economists, Software Developers)]; A --> D[License Requirements: Medical, Para-Medical, Law, , specific engineering, Accounting];
```

Unskilled with/without
experience (General
employees, factories,
machinery, heavy duty
operators/drivers)

Academic + experience
abroad (Engineers,
Economists, Software
Developers)

License Requirements:
Medical, Para-Medical, Law, ,
specific engineering,
Accounting

Hebrew Studies Centers

Immigration has always been a serious Israeli concern, as evidenced by the ministerial rank given to the official in charge of immigration and the absorption of immigrants. Various institutions and programs have helped integrate immigrants into Israeli society.

Perhaps the most ubiquitous of the absorption organizations is the *ulpan*, a term for intensive Hebrew language school. Since Israel's founding, the *ulpan* (plural ulpanim) were funded by municipalities, the Ministry of Education and Culture, the Ministry of Immigrant Absorption or the Jewish Agency. On most cases, ulpanim were heavily subsidized and were thus free for new immigrants. Many were residential, offering dormitory-like accommodations intended for single immigrants while giving half-day instruction for six months.

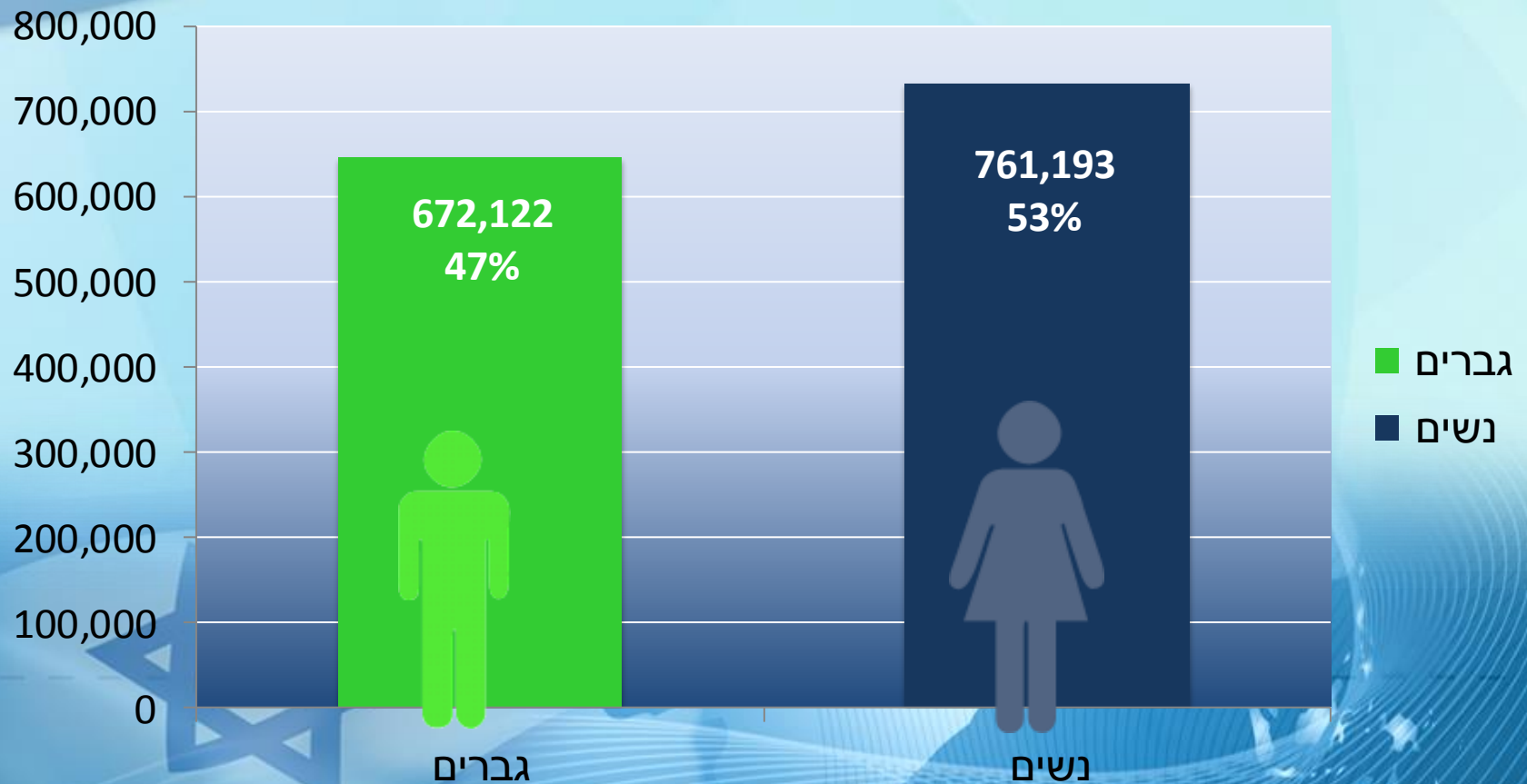
Municipal ulpanim usually offered less intensive night classes and many kibbutzim also ran ulpanim which combined half-day language instruction with a half day's labour on the kibbutz.



Aliya's Contribution to Economy, Society and National Security Balance

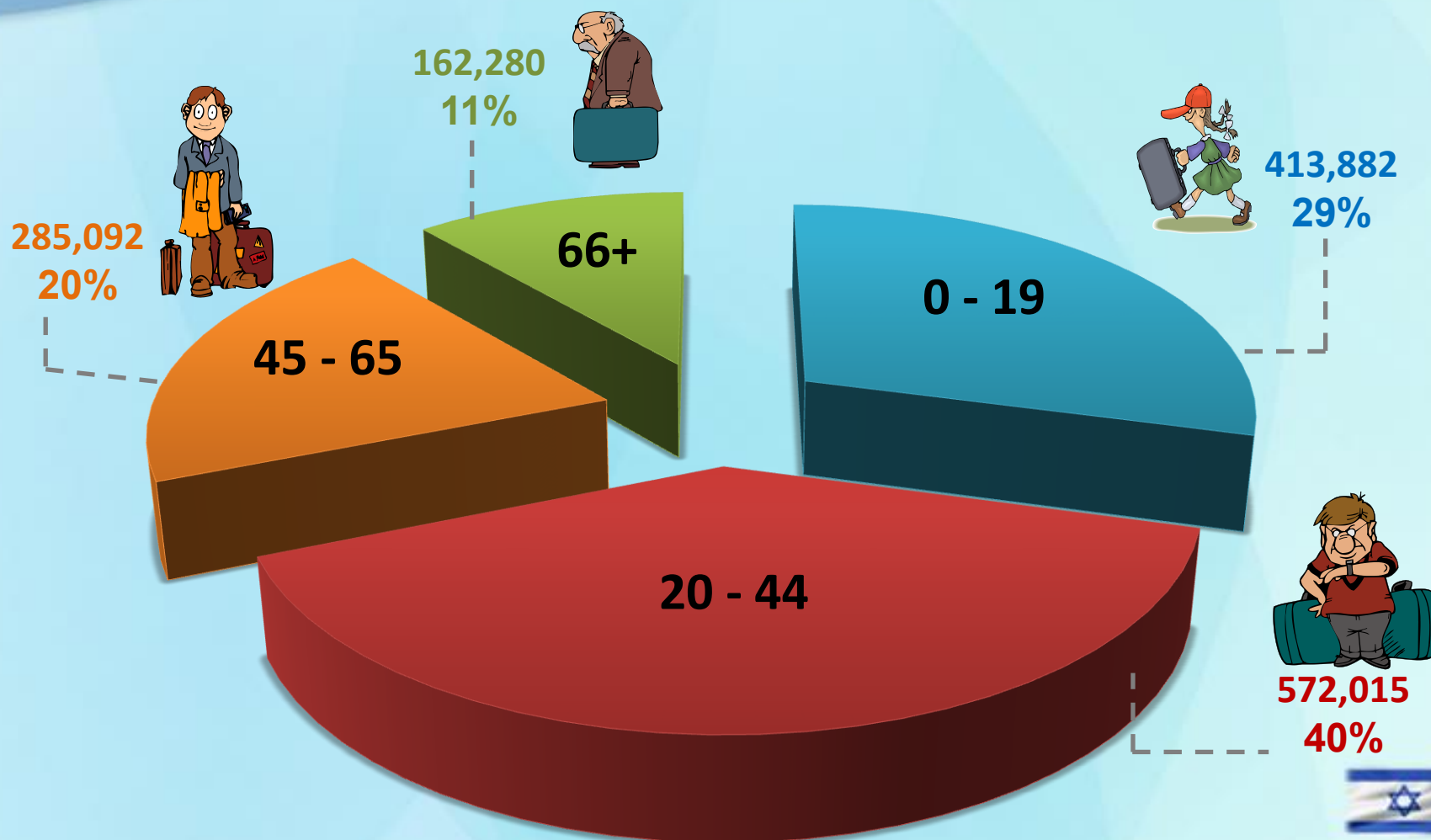


Aliya Gender Structure 1989-2016



Age at aliya, 1989-2014

Total immigrants - 1,433,269



Immigrants' education

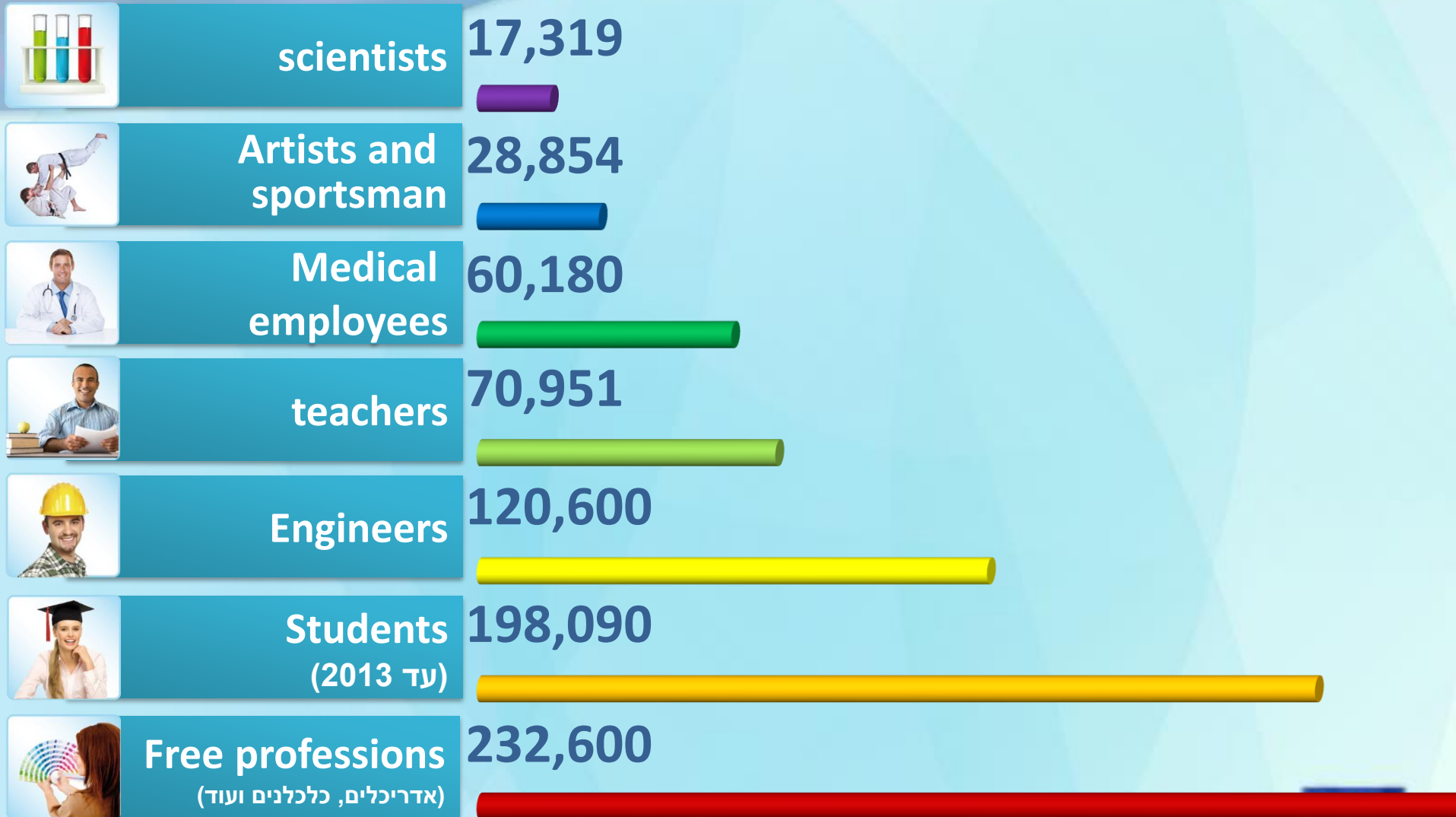
Above 70% of the *olim* obtained secondary or higher education

השכלה	מספר	אחוז
Total	1,433,315	100.0%
Elementary	365,347	25.5%
Secondary	509,669	35.6%
Upper-secondary vocational	229,082	16.0%
Academic	243,850	17.0%
Unknown	85,367	5.9%

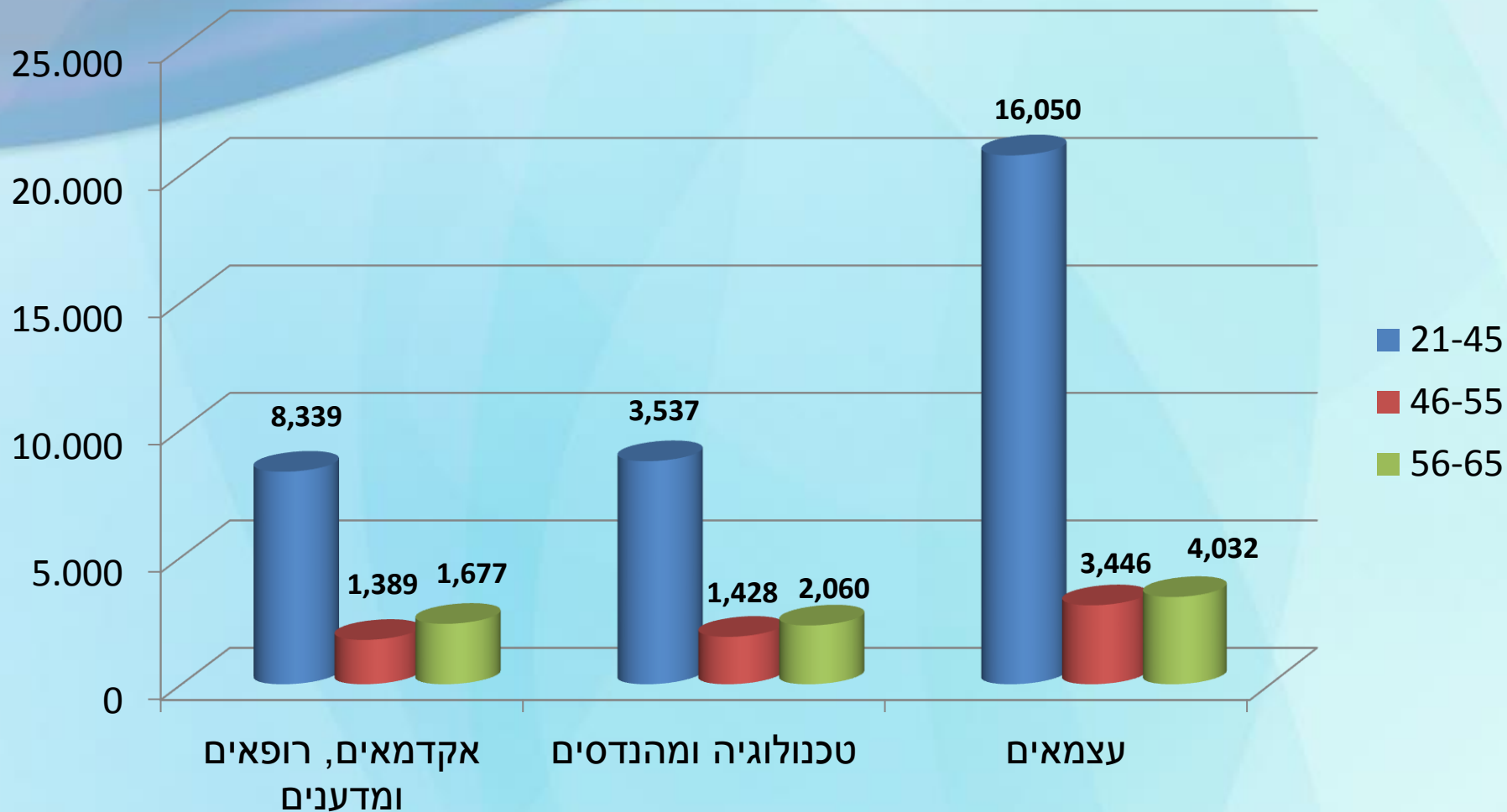


Olim according to their occupation

1989-2014



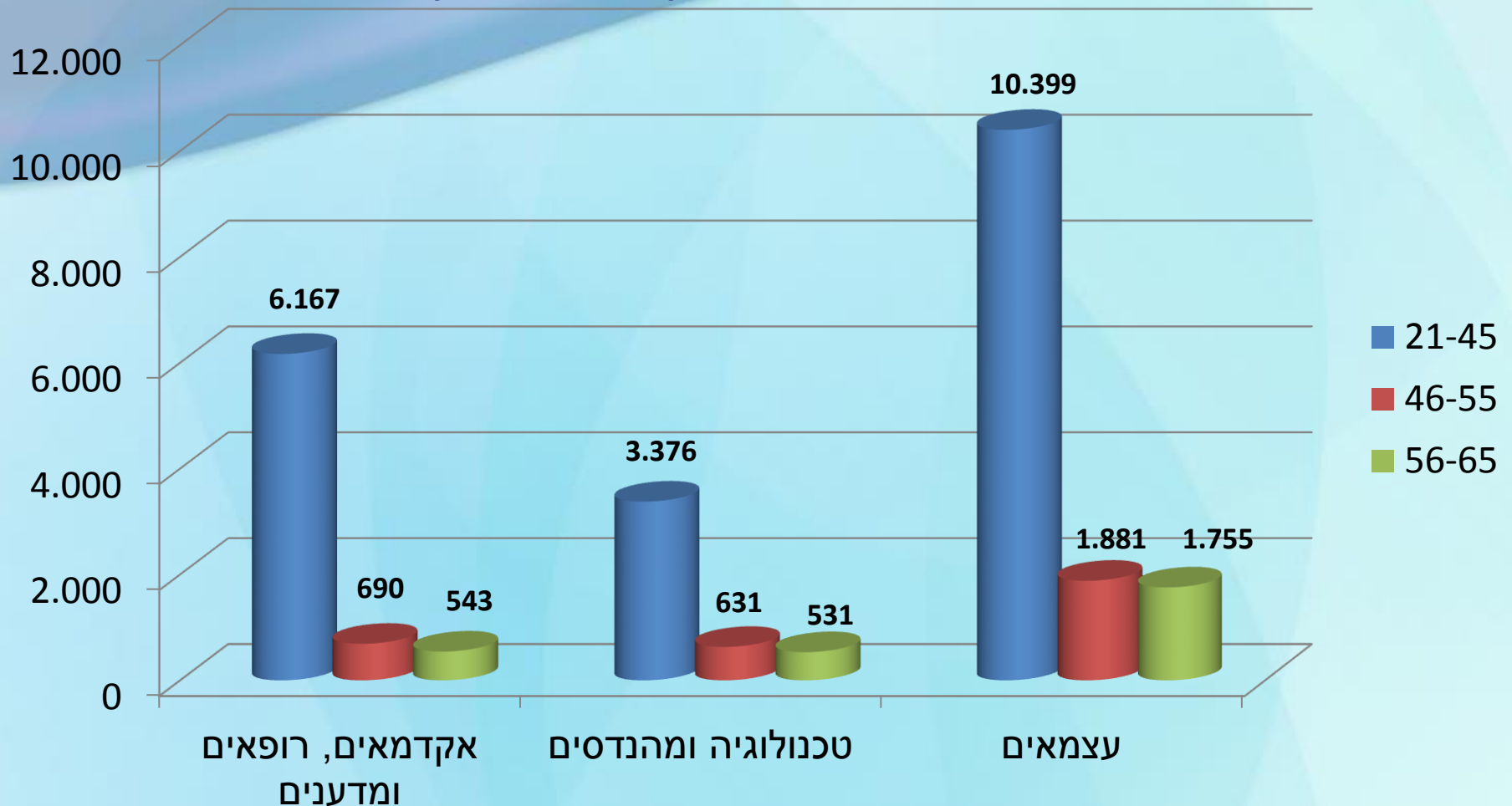
Olim of the working age per occupation, 2010-14



Participation in the Labor Force
Among Olim is 63.6% (acc. to CSB data)



Returning Israeli residents of working age per occupation, 2007-11

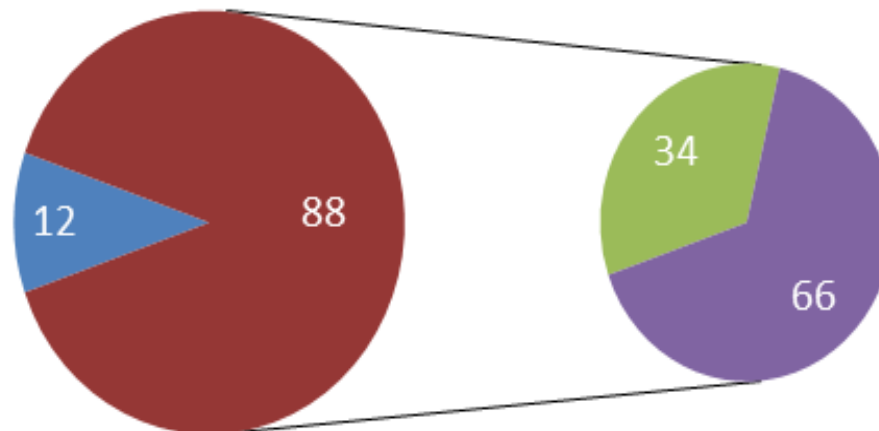


Participation in the Labor Force
Among returning Residents – 71%



Employment after immigration

- Never worked in Israel after immigration
- Working or worked in Israel after immigration
- Working or worked in the same profession they had abroad
- Working or worked in a different profession than the one they had abroad

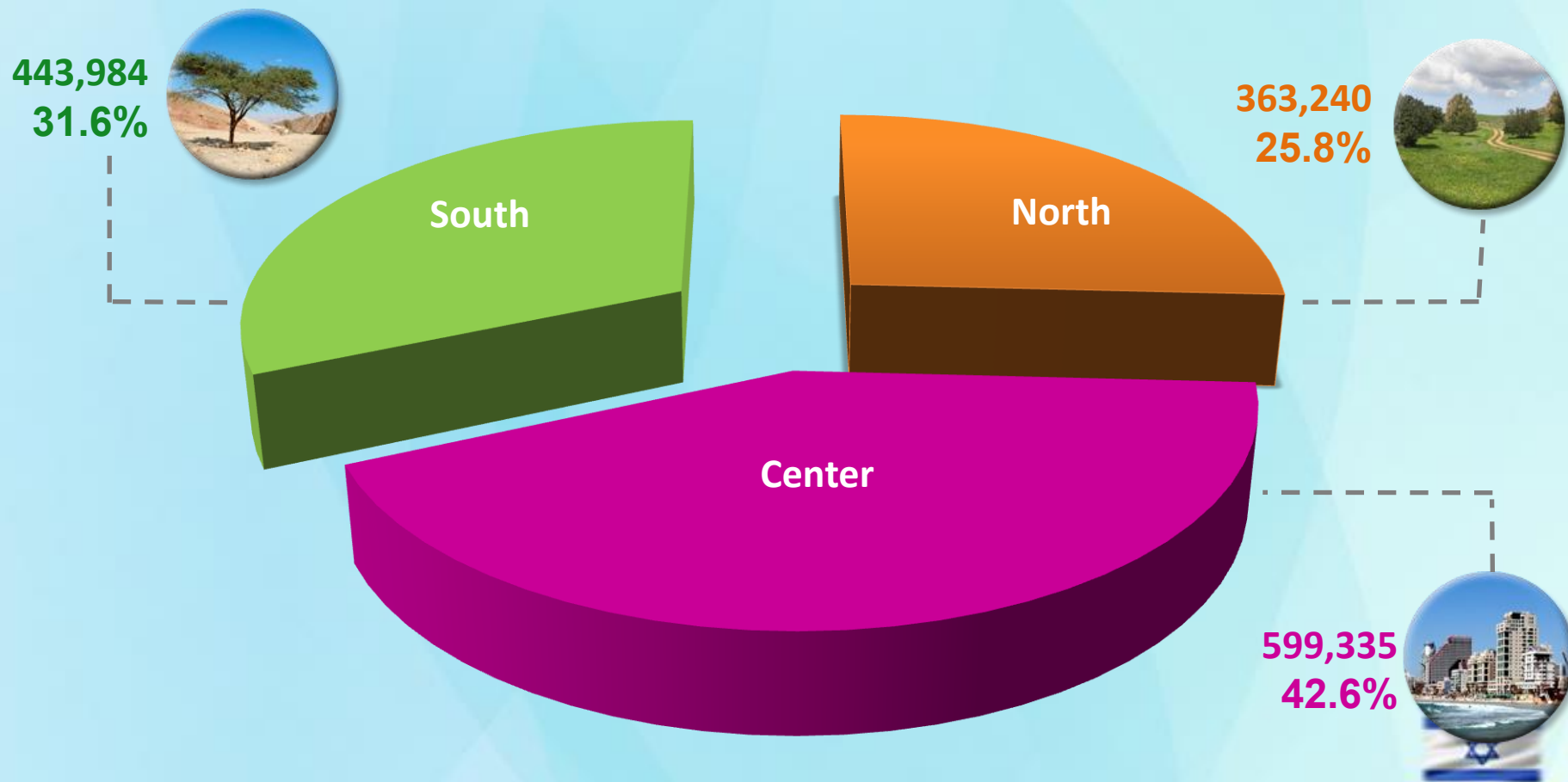


Breakdown of New Immigrants by Region

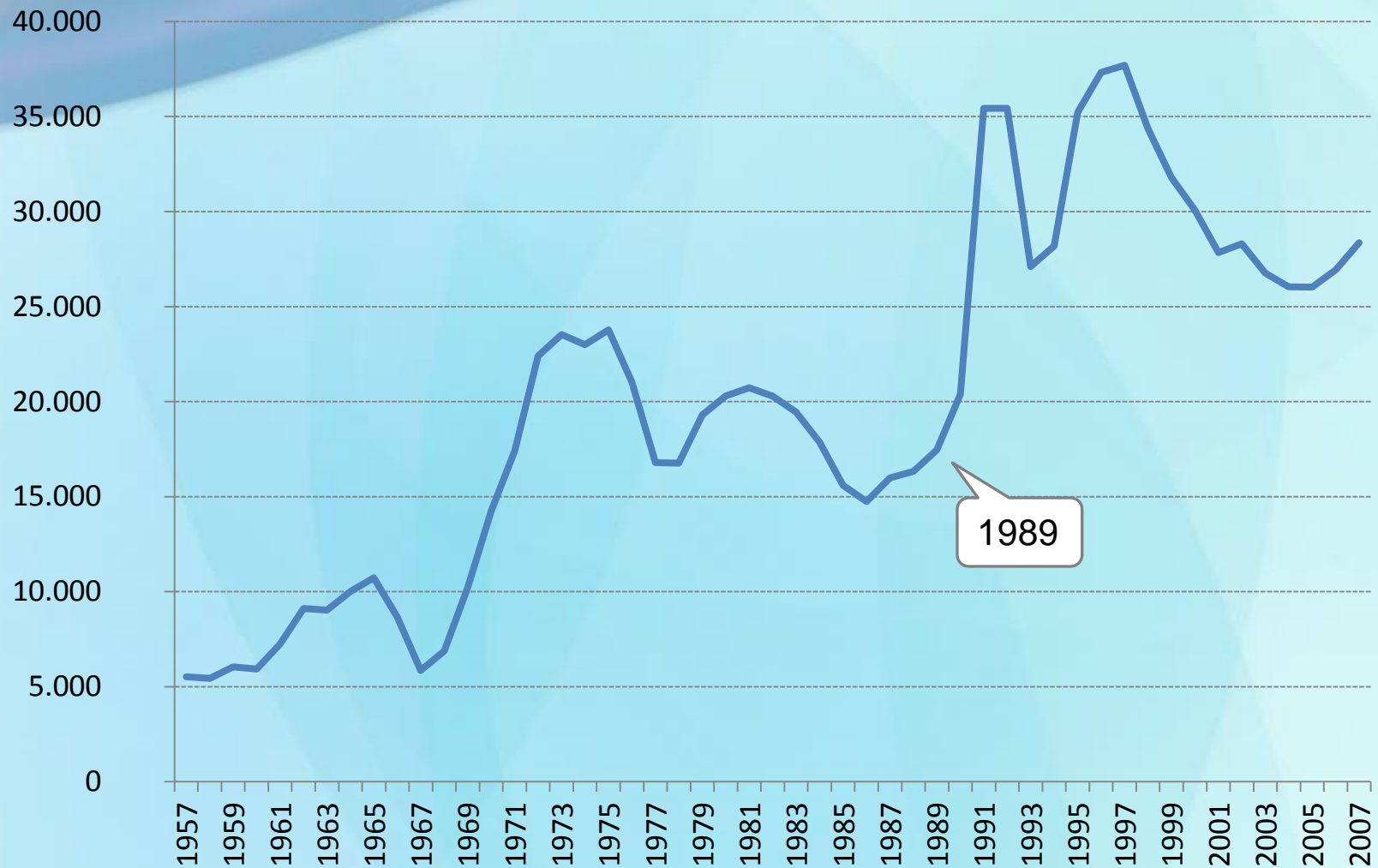


Ministry of Aliyah and
Immigrant Absorption

Approximately 60% of new immigrants reside in Northern and Southern Israel.

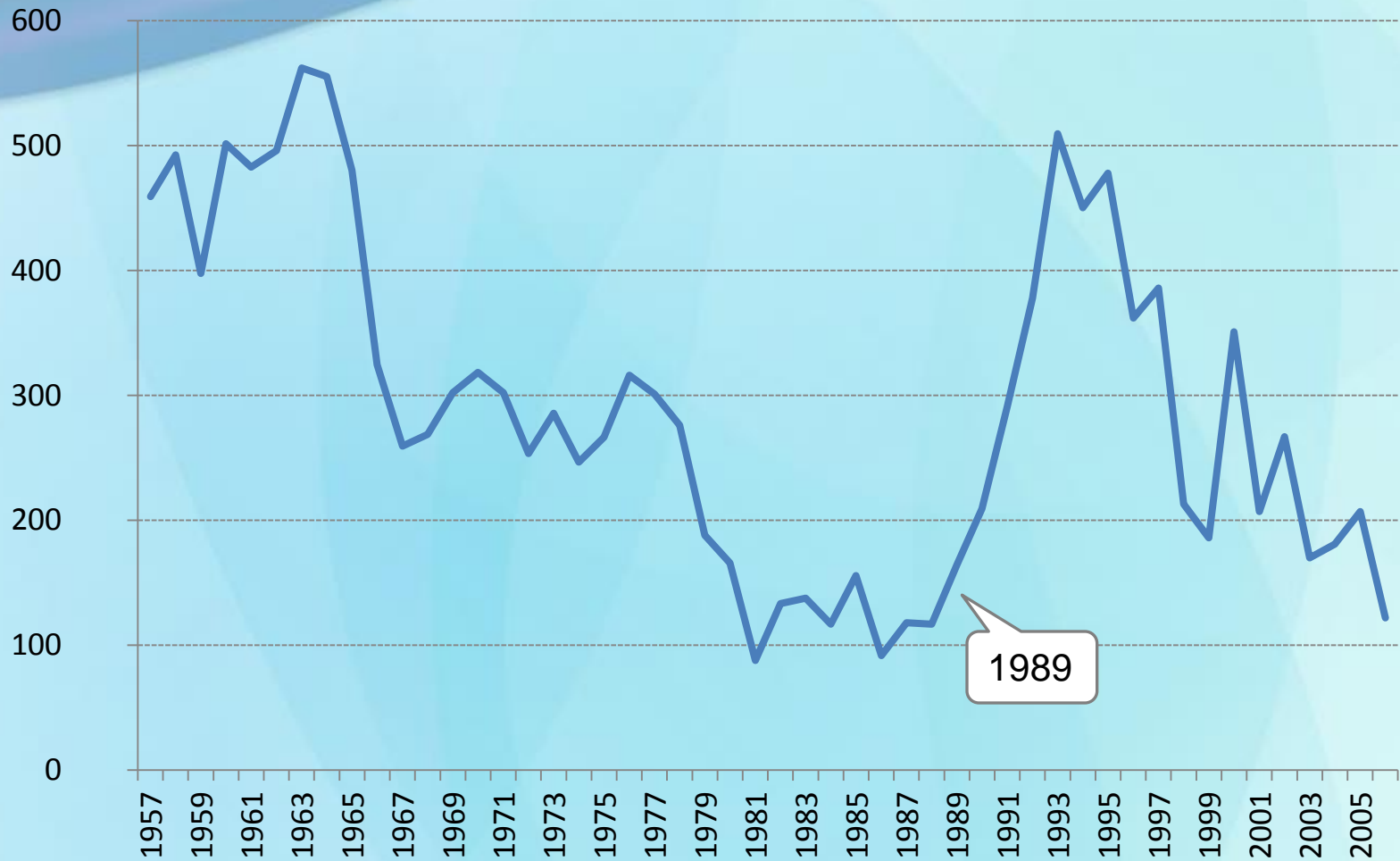


Investment into Civil Construction in Israel (₪ millions, 2005 prices)

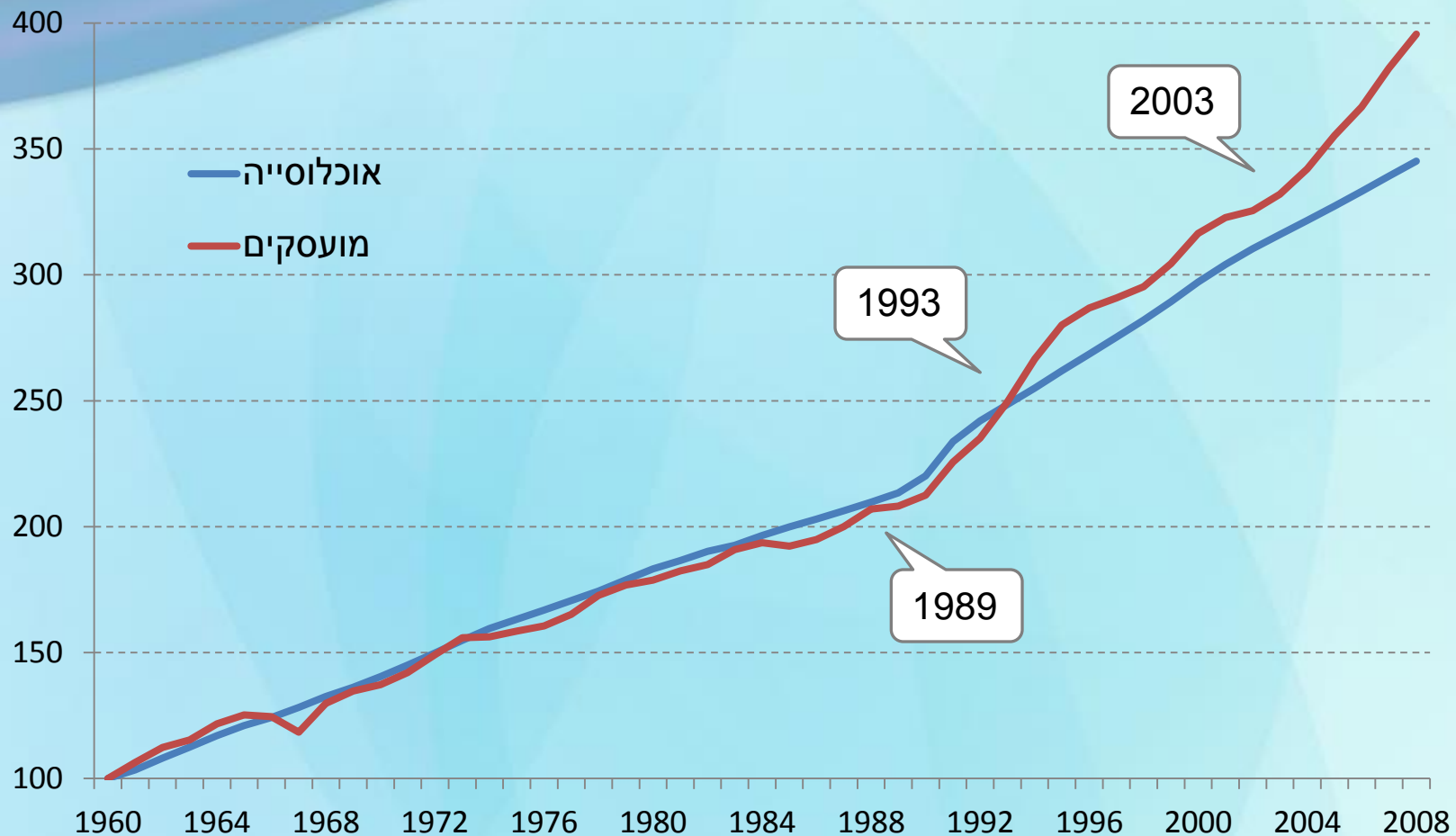


Infrastructure investment in Israel

התחלת סלילת כבישים, אורך בק"מ



Population and Employment Development Index (1960=100)



Employment

Professional Hebrew *Ulpans*

אולפן א'/רפואי (500 שעות), עברית תעסוקתית (150 שעות), עברית מתקדמת (300 שעות), וואוצ'רים ללימודי השפה העברית על פי החלטת ממשלה לעולי צרפת, בלגיה ואוקראינה



Preparations Workshop(s) for Joining the Israeli Labor Market

הסדנאות לחיפוש עבודה נועדו לקידום השתלבותם התעסוקתית של עולים ותושבים חוזרים. התכנים: כתיבת קורות חיים, הכרת שוק העבודה, טכניקות ושיטות לראיון עבודה כולל טלוויזיה במעגל סגור, מפגש עם מעסיקים, כלים לחיפוש העבודה



Employment Center:

השמה, אבחון תעסוקתי (כישורים מקצועיים תעסוקתיים בהתאם למגמות שוק העבודה הנוכחי), ייעוץ לוואוצ'רים (סיוע בבחירת הקורס בהתאם לכישורים מקצועיים ודרישות שוק העבודה)



Employment – Vouchers Program

Aim: Vocational training, retraining and advancement of olim to adjust their employment skills to the Israeli labor market



Target Population: new Olim and Returning citizens that are unemployed or interested to obtain professions that of the demand



Financial assistance - up to 7,000 NIS (not more than 80% of the cost of the course)



Duration: up to 12 calendar months or up to 600 hours of learning



תעסוקה

Preparatory courses for licensing and certification

משרד העלייה והקליטה משתתף בארגון ומימון קורסי הכנה לבחינות רישוי למקצועות הבאים: רופאים, רופאי שיניים, רוקחים, אחיות, רופאים וטרינריים, עורכי דין, רואי חשבון



Requalification of various Academic Degree holders to nursing
(2.5 years long course)



Employment

Promotion of immigrants employment through partial financing their wages

מטרת הסיוע – לעודד העסקת עולים ותושבים חוזרים בהשתלבות בעבודה מקצועית. הסיוע ניתן לפרקי זמן מוגבלים למעסיקים פרטיים ולמוסדות ציבור ומותנה בתקציב



Types of financial assistance in the field of employment

Income support for work seekers, tuition in external courses (Vouchers), living subsidies and reimbursement of travel expenses for participants of licensing and certification courses, participation in the licensing examination fees, grants for artists and athletes, etc.



Entrepreneurship as a career track among immigrants from the former Soviet Union

The rate of entrepreneurs who immigrated from the FSU grew from 2.9% in 2012 to 9% in 2013. The proportion of women entrepreneurs among the FSU olim was higher than in the Israeli population in general

Entrepreneurship as a career track for new immigrants

- In 2016 there was a 35% increase in the number of beneficiaries in the Ma'alot Center: about 1,200 immigrants received counseling for starting their business, and about 700 participated in the business-preparation workshops.
- 217 business loans for olim were approved in 2016, compared with 189 in the previous year.
- In 2016, the Ministry supported 56 new immigrants' enterprises in the field of technology



Immigrant entrepreneurship promotion

Cost to benefit ratio

1 : 52

**Benefit for
Israeli economy**

3,600,394,104 NIS

**Total cost of immigrants'
placement in 2009 in
the entrepreneurship,
vocation and science**

69,875,308 NIS



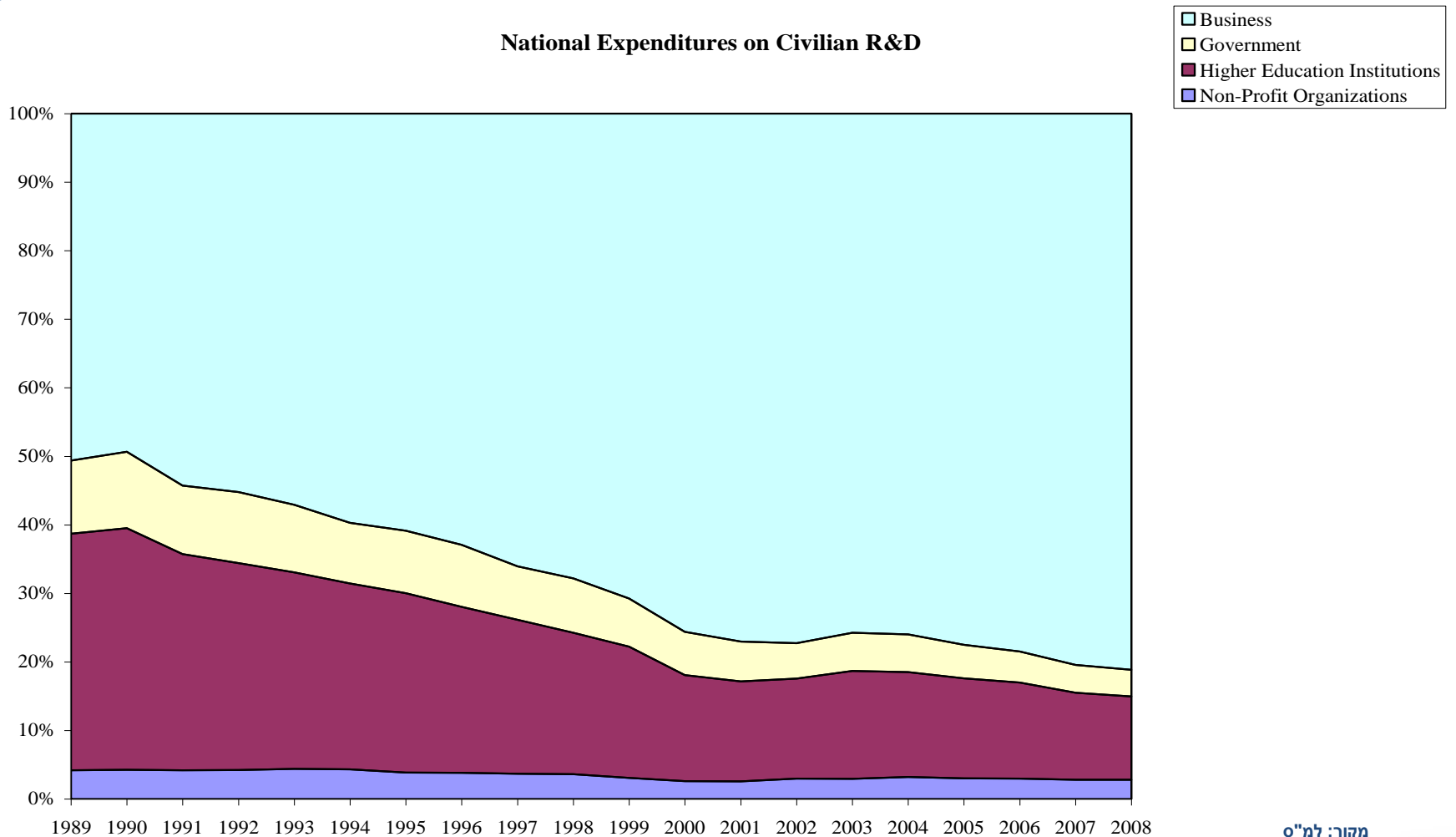
State of Israel

Ministry of Aliya and Integration



STRUCTURE OF NATIONAL INVESTMENT IN IMMIGRANTS' INTEGRATION IN THE ECONOMY

National Expenditures on Civilian R&D



מקור: למ"ס



Absorption in Science

Cost to benefit
ratio

1:20

benefit
Total benefited to
National economy
in the course
of the 20 years
₪ 1,152,477

benefit
Annual benefit
to national economy
₪ 562,833

cost

Average annual
accommodation cost
of immigrant scientists
₪ 56,480

Cost to
benefit ratio

1:18

benefit

Total benefited to
National economy
in the course
of the 20 years
₪ 228,615,565

cost

Total cost of immigrant
scientists' absorption
₪ 12,595,040